



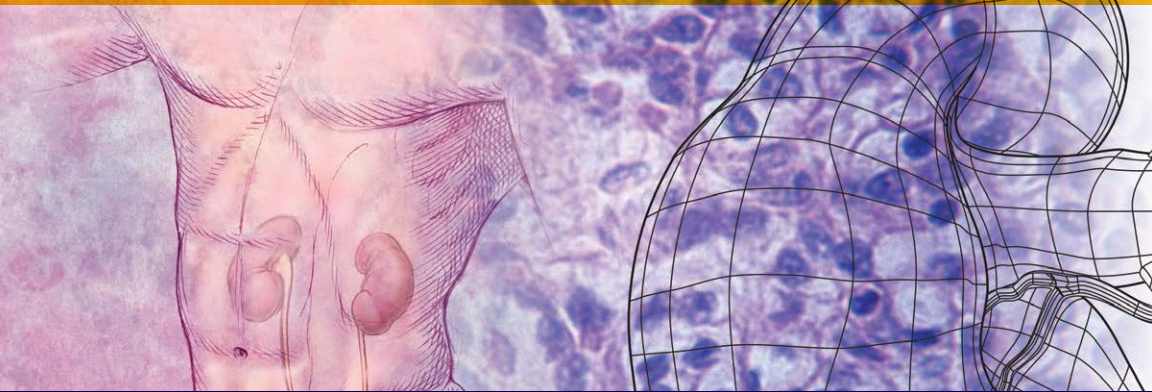
HARVARD
MEDICAL SCHOOL



**Beth Israel Deaconess
Medical Center**
Department of Medicine

MARCH 18 - 23, 2018 | The Fairmont Copley Plaza | Boston, Massachusetts

NEPHROLOGY 2018



**NEPHROLOGISTS CAN RELY ON THIS PROGRAM FOR UPDATES AND
ADVANCES IN THE DIAGNOSIS AND MANAGEMENT OF KIDNEY DISEASES**

Now offering up to 49 MOC points plus more than 50 interactive lectures, case-based workshops and “Meet the Professor” sessions led by the foremost authorities in nephrology. Topics include:

- Glomerular disease
- Acute renal failure
- Renal transplantation
- Maintenance immunosuppression
- Resistant hypertension
- Renal disease and pregnancy
- Acid-base disorders
- Fluid and electrolyte disorders
- Potassium balance
- Renovascular hypertension
- Bone mineral disorders
- Lupus nephritis
- Diuretic resistance
- Dialysis
- Renal stones
- Polycystic kidney disease
- Genetic renal diseases
- Cardiorenal syndrome

UNDER THE LEADERSHIP OF:

Martin Pollak, MD | Burton D. Rose, MD
Bradley M. Denker, MD | Melanie P. Hoenig, MD

EARN UP TO:

49 AMA PRA Category 1 Credits™ • 49 ABIM MOC Points • 49 ECMECs® • 49 AOA Category 2-A Credits
The Royal College of Physicians and Surgeons of Canada Recognizes This Educational Activity

REGISTER NOW www.NephrologyBoston.com

Course Description

Many practicing nephrologists and physicians find it difficult to keep up with the rapid scientific and technological advances in renal care because medicine is changing at a faster pace than ever before. As busy clinicians, we need to stay current in order to optimize patient care and improve outcomes.

We invite you to advance your knowledge by joining world-renowned experts and Harvard Medical School's leading clinical faculty for a comprehensive review of nephrology. **The most important updates and advances** in the diagnosis and treatment of kidney diseases will be taught, including **practical information that you can use now to provide exceptional patient care.**

This CME course will address pathophysiologic and clinical issues in the major areas of nephrology, including:

- Diagnostic testing
- Acid-base and fluid and electrolyte disorders
- Dialysis
- Hypertension
- Renal transplantation and complications
- Management and individualized therapy of chronic kidney diseases and other renal complications

Over 96% of past participants have rated this course as "superior" or "above average" compared with other postgraduate courses they have attended, placing it among the highest-rated courses at Harvard Medical School.

Presenters will also discuss well-recognized medical complications and provide specific recommendations for optimal care. This is an excellent opportunity to learn the latest "best practices" and enhance your clinical skills. Both new and returning attendees will benefit from the comprehensive curriculum.

ENGAGING SESSIONS WITH PROMINENT EXPERTS

All sessions are led by prominent teachers and clinicians who provide specific recommendations for incorporating the latest updates into your practice. Course material will be presented in a distraction-free environment through formats that include:

- Innovative lectures
- Valuable case-based sessions
- Interactive workshops with the Audience Response System*
- Helpful small-group "Meet the Professor" sessions to discuss challenging cases and ask pressing questions
- Informal opportunities to share and exchange information and teachings with peers and fellow healthcare professionals

WHY YOU SHOULD ATTEND

Increase your skills and knowledge to deliver unparalleled care to your patients. You will leave the course with:

- The latest nephrology knowledge, insight and teachings from leading authorities and clinical educators
- A greater understanding of how to apply the latest tools and tests in your practice
- Awareness of your strengths and areas for improvement
- A network of like-minded professional colleagues
- An in-depth print and electronic syllabus packed with valuable information and real-world solutions

LEARNING OBJECTIVES

At the end of this course, you will be able to:

- Discuss how to approach and manage patients with acid-base and electrolyte disturbances
- Define hypertension treatment goals and management for different populations
- Review strategies for diagnosing and managing acute kidney injury
- Evaluate new developments to reduce the risk of chronic kidney disease progression
- Incorporate optimal immunosuppression strategies for initial and maintenance immunosuppression
- Develop strategies to screen, prevent and treat patients with long-term complications of kidney transplantation
- Define optimal management for non-immunologic complications after kidney transplantation

*The Audience Response System is an interactive electronic system that anonymously tests participants' diagnostic and therapeutic knowledge.

Directors



Martin Pollak, MD
Professor of Medicine
Harvard Medical School
Chief, Division of
Nephrology
Beth Israel Deaconess
Medical Center



Burton D. Rose, MD
Clinical Professor of
Medicine
Harvard Medical School
Founding Editor
UpToDate, Inc.

Co-Directors



Bradley M. Denker, MD
Associate Professor of
Medicine
Harvard Medical School
Clinical Chief, Renal
Division
Beth Israel Deaconess
Medical Center
Chief of Nephrology
Associate Chief of
Medical Specialties
Harvard Vanguard
Medical Associates



Melanie P. Hoenig, MD
Associate Professor of
Medicine
Course Director of
Homeostasis II
Harvard Medical School
Staff Physician
Beth Israel Deaconess
Medical Center

Faculty

Gerald B. Appel, MD
Professor of Medicine
Columbia University College of Physicians
and Surgeons
Director, Glomerular Kidney Center
Columbia University Medical Center

George L. Bakris, MD, FASH, FASN
Professor of Medicine
Director, ASH Comprehensive Hypertension Center
The University of Chicago

Daniel C. Brennan, MD, FACP
Professor of Medicine
Johns Hopkins Medical School
Medical Director and Co-Director
Comprehensive Transplant Center
Department of Internal Medicine
Johns Hopkins Hospital

Robert S. Brown, MD
Associate Professor of Medicine
Harvard Medical School
Associate Chief for Academic Affairs
Nephrology Division
Beth Israel Deaconess Medical Center
President, The Organization for Renal Care
in Haiti (TORCH)

Robert A. Cohen, MD, MSc
Assistant Professor of Medicine
Harvard Medical School
Director of Education, Nephrology Division
Beth Israel Deaconess Medical Center

Gary C. Curhan, MD, ScD
Professor of Medicine
Harvard Medical School
Professor of Epidemiology
Harvard School of Public Health
Physician
Brigham and Women's Hospital

John Danziger, MD
Assistant Professor of Medicine
Harvard Medical School
Beth Israel Deaconess Medical Center

Michael Emmett, MD
Professor of Medicine
Texas A&M School of Medicine and
University of Texas Southwestern
Chairman of Internal Medicine
Baylor University Medical Center
Baylor Scott & White Health

Amy R. Evenson, MD, MPH
Assistant Professor of Surgery
Harvard Medical School
Attending Surgeon
Beth Israel Deaconess Medical Center

Ronald J. Falk, MD
Allen Brewster Distinguished Professor of Medicine
Chair, Department of Medicine
The University of North Carolina at Chapel Hill

Esther E. Freeman, MD, PhD
Assistant Professor of Dermatology
Harvard Medical School
Massachusetts General Hospital

Frederick D. Grant, MD
Assistant Professor of Radiology
Harvard Medical School

Stewart H. Lecker, MD, PhD
Assistant Professor of Medicine
Harvard Medical School
Director, Nephrology Fellowship Training Program
Beth Israel Deaconess Medical Center

Paul M. Palevsky, MD
Professor of Medicine and Clinical & Translational
Science
University of Pittsburgh School of Medicine
Chief, Renal Section
VA Pittsburgh Healthcare System

Martha Pavlakis, MD
Associate Professor of Medicine
Harvard Medical School
Medical Director
Kidney and Pancreas Transplantation
Beth Israel Deaconess Medical Center

Marc A. Pohl, MD
Ray W. Gifford, Jr., MD Endowed Chair
in Hypertension
Department of Nephrology and Hypertension
Glickman Urological and Kidney Institute
The Cleveland Clinic

Jai Radhakrishnan, MD, MS
Professor of Medicine
Columbia University College of Physicians
and Surgeons
Clinical Chief, Nephrology
Columbia University Medical Center

Helmut G. Rennke, MD
Professor of Pathology
Harvard Medical School
Director, Renal Pathology
Brigham and Women's Hospital

Adam M. Segal, MD
Instructor in Medicine
Harvard Medical School
Harvard Vanguard Medical Associates
Beth Israel Deaconess Medical Center
under HVMA

Theodore I. Steinman, MD
Clinical Professor of Medicine
Harvard Medical School
Senior Physician
Beth Israel Deaconess Medical Center
Brigham and Women's Hospital

Richard H. Sterns, MD
Emeritus Professor of Medicine
University of Rochester School of Medicine
and Dentistry

Ravi I. Thadhani, MD, MPH
Professor of Medicine
Harvard Medical School
Chief, Division of Nephrology
Massachusetts General Hospital
Executive Director, Clinical Trials Office
Partners HealthCare

Anand Vaidya, MD, MMSc
Assistant Professor of Medicine
Harvard Medical School
Director, Center for Adrenal Disorders
Brigham and Women's Hospital
Director, e-Learning Initiative
New England Journal of Medicine

Mark E. Williams, MD, FACP, FASN
Associate Professor of Medicine
Harvard Medical School
Director of Dialysis Operations
Beth Israel Deaconess Medical Center
Senior Staff Physician
Joslin Diabetes Center

Myles S. Wolf, MD, MMSc
Professor of Medicine
Chief, Division of Nephrology
Duke University School of Medicine

Mark L. Zeidel, MD
Herrman Ludwig Blumgart Professor of Medicine
Harvard Medical School
Chair, Department of Medicine
Beth Israel Deaconess Medical Center

Registration Information

Nephrology — 2018	REGISTER ON OR BEFORE JAN. 5, 2018, AND SAVE \$100	REGISTER AFTER JAN. 5, 2018
Physicians and Allied Health Professionals	\$1,550	\$1,650
Residents and Fellows in Training	\$1,100	\$1,200

Fees shown in USD. Your tuition includes all breakfasts, coffee and breaks, and complimentary Internet access. All attendees will receive a comprehensive printed syllabus with online access.

General Information

ACCREDITATION

Harvard Medical School is accredited by the Accreditation Council for Continuing Medical Education to provide continuing medical education for physicians.

Harvard Medical School designates this live activity for a maximum of 49 AMA PRA Category 1 Credits™. Physicians should claim only the credit commensurate with the extent of their participation in the activity.

ABIM MAINTENANCE OF CERTIFICATION (NEW)

Successful completion of this CME activity enables the participant to earn up to 49 MOC points in the American Board of Internal Medicine's (ABIM) Maintenance of Certification (MOC) program. Participants will earn MOC points equivalent to the amount of CME credits claimed for the activity. It is the CME activity provider's responsibility to submit participant completion information to ACCME for the purpose of granting ABIM MOC points.

CANADIAN ACCREDITATION

The Royal College of Physicians and Surgeons of Canada recognizes conferences and workshops held outside of Canada that are developed by a university, academy, hospital, specialty society or college as accredited group learning activities.

EUROPEAN ACCREDITATION

Through an agreement between the American Medical Association and the European Union of Medical Specialists, physicians may convert AMA PRA Category 1 Credits™ to an equivalent number of European CME Credits® (ECMECs®). Information on the process of converting AMA PRA Category 1 Credits™ to ECMECs® can be found at: www.eaccme.eu.

OSTEOPATHIC ACCREDITATION

This program has been accredited by the American Osteopathic Association for 49 AOA Category 2-A Credits.

ABMS/ACGME COMPETENCIES

The course is designed to meet the following American Board of Medical Specialties (ABMS)/Accreditation Council for Graduate Medical Education (ACGME) competencies:

- Patient care and procedural skills
- Medical knowledge
- Practice-based learning and improvement

IOM COMPETENCIES

The course is designed to meet the following Institute of Medicine (IOM) competencies:

- Provide patient-centered care
- Employ evidence-based practice
- Utilize informatics

DISCLOSURE POLICY

Harvard Medical School (HMS) adheres to all ACCME Essential Areas, Standards, and Policies. It is HMS's policy that those who have influenced the content of a CME activity (e.g., planners, faculty, authors, reviewers and others) disclose all relevant financial relationships with commercial entities so that HMS may identify and resolve any conflicts of interest prior to the activity. These disclosures will be provided in the activity materials along with disclosure of any commercial support received for the activity. Additionally, faculty members have been instructed to disclose any limitations of data and unlabeled or investigational uses of products during their presentations.

PAYMENT, CONFIRMATION AND REFUND POLICY

You may register by credit card (Visa, MasterCard or American Express) or check using Harvard Medical School's secure online registration system at www.NephrologyBoston.com. A nonrefundable processing fee of \$5 (USD) will be assessed per transaction. Upon receipt of your paid registration, an email confirmation from the HMS-DCE office will be sent to you. **Be sure to include an email address that you check frequently.** Your email address is used for critical information, including registration confirmation, evaluation and certificate. **Refund requests must be received by postal mail, email or fax.** Refunds, less an administrative fee of \$150, will be issued for all cancellations received two weeks before the start of the course. No refunds will be issued should cancellation occur less than two weeks before. "No shows" are subject to the full course fee, and no refunds will be issued once the conference has started.



COURSE LOCATION

All sessions for this activity will be held at:

The Fairmont Copley Plaza
138 St. James Avenue
Boston, MA 02116
Tel: 617-267-5300

ACCOMMODATIONS AND TRAVEL

A limited number of rooms have been reserved at the Fairmont Copley Plaza (telephone: 617-267-5300) until February 24, 2018. Please specify that you are enrolled in this course to receive a reduced room rate of \$329/\$349 (Moderate/Deluxe). Hotel arrangements can also be made online at: www.NephrologyBoston.com/Accommodations. Please do not purchase nonrefundable airline ticket(s) until you have received an email from our office confirming your paid registration.

INQUIRIES

By phone 617-384-8600, Monday-Friday, 9 AM to 5 PM (EST), or by email at: ceprograms@hms.harvard.edu.

DISCLAIMER

CME activities sponsored by Harvard Medical School are offered solely for educational purposes and do not constitute any form of certification of competency. Practitioners should always consult additional sources of information and exercise their best professional judgment before making clinical decisions of any kind.



This program is endorsed in part by the International Society of Nephrology.

REGISTER EARLY—SPACE IS LIMITED

SUNDAY, MARCH 18, 2018

7:00am – 7:50am

Registration and Continental Breakfast

7:50am – 8:00am

Introduction and Welcome

8:00am – 9:00am

State-of-the-Art Approaches to Small-Vessel Vasculitis

Ronald J. Falk, MD

9:00am – 10:00am

Renal Artery Disease, Renovascular Hypertension and Ischemic Nephropathy
Marc A. Pohl, MD

10:00am – 10:20am

Refreshment Break

10:20am – 11:20am

Efficacy of Immunosuppressive Drugs in Idiopathic Nephrotic Syndrome

Ronald J. Falk, MD

11:20am – 12:05pm

Resistant Hypertension: Current Strategies and Treatment Options

Marc A. Pohl, MD

12:05pm – 1:20pm

Lunch Break

12:35pm – 1:20pm

Meet the Professors – Answering Your Challenging Questions (bring your lunch)

Ronald J. Falk, MD

Marc A. Pohl, MD

1:20pm – 2:20pm

IgA Nephropathy and H-S Purpura: Individualizing Therapy

Ronald J. Falk, MD

2:20pm – 3:05pm

Basic PD Essentials for Clinical Practice
Adam M. Segal, MD

3:05pm – 3:15pm

Rejuvenation Exercises

3:15pm – 3:30pm

Refreshment Break

3:30pm – 4:15pm

Prevention and Treatment of Common PD Complications

Adam M. Segal, MD

4:15pm – 5:00pm

Advanced CKD: Challenging Conversations Related to Prognosis and Treatment Decisions

Robert Cohen, MD

5:00pm – 5:30pm

Renal Imaging: Essentials for Every Nephrologist

Frederick D. Grant, MD

MONDAY, MARCH 19, 2018

7:00am – 7:30am

Continental Breakfast

7:30am – 8:15am

Acid-Base: Elementary Issues

Michael Emmett, MD

8:15am – 9:00am

Acid-Base: Advanced Issues

Michael Emmett, MD

9:00am – 10:00am

Relation Between Salt and Water
Richard H. Sterns, MD

10:00am – 10:20am

Refreshment Break

10:20am – 11:20am

Workshop: Fluid and Electrolytes

Richard H. Sterns, MD

11:20am – 12:05pm

Test Your Knowledge: Cases and Discussion

Stewart H. Lecker, MD, PhD

12:05pm – 1:20pm

Lunch Break

12:35pm – 1:20pm

Meet the Professors – Answering Your Challenging Questions (bring your lunch)

Richard H. Sterns, MD

Michael Emmett, MD

1:20pm – 2:20pm

Workshop: Acid-Base Clinical Cases

Michael Emmett, MD

2:20pm – 3:05pm

Disorders of Potassium Balance: A Comprehensive Primer

Richard H. Sterns, MD

3:05pm – 3:15pm

Rejuvenation Exercises

3:15pm – 3:30pm

Refreshment Break

3:30pm – 4:30pm

Case-Based Clinical Questions

Robert S. Brown, MD

4:30pm – 5:30pm

Case-Based Workshop: Problems in Dialysis

John Danziger, MD

TUESDAY, MARCH 20, 2018

7:00am – 7:30am

Continental Breakfast

7:30am – 8:30am

Workshop: Challenging Cases in Glomerular Disease

Helmut G. Rennke, MD

8:30am – 9:30am

Immunosuppressive Management in Acute Infection and Malignancy in Renal Transplantation

Daniel C. Brennan, MD, FACP

9:30am – 9:50am

Refreshment Break

9:50am – 10:50am

Overview of Renal Transplant Rejection: Pathology, Diagnosis, Treatment and Outcomes

Daniel C. Brennan, MD, FACP

10:50am – 11:50am

Management of Polycystic Kidney Disease

Theodore I. Steinman, MD

11:50am – 12:50pm

Genetic Renal Disease: Which Diagnostic Test Do I Order – A Practical Approach

Martin Pollak, MD

12:50pm – 2:05pm

Lunch Break

1:20pm – 2:05pm

Meet the Professor – Answering Your Challenging Questions (bring your lunch)

Daniel C. Brennan, MD, FACP

2:05pm – 3:05pm

Advances in Phosphate Homeostasis Management

Myles S. Wolf, MD, MMSC

3:05pm – 3:15pm

Rejuvenation Exercises

3:15pm – 3:30pm

Refreshment Break

3:30pm – 4:30pm

Tubulointerstitial Disease/HIV

Melanie P. Hoenig, MD

4:30pm – 5:45pm

Pathology and Mechanisms of Glomerular Diseases

Helmut G. Rennke, MD

WEDNESDAY, MARCH 21, 2018

7:00am – 7:30am

Continental Breakfast

7:30am – 8:30am

Updates on the Management of Chronic Kidney Disease

Bradley M. Denker, MD

8:30am – 9:15am

Contrast-Associated Acute Kidney Injury: Addressing This Common Challenge

Paul M. Palevsky, MD

9:15am – 10:15am

Noninfectious Complications of Renal Transplantation

Martha Pavlakis, MD

10:15am – 10:30am

Refreshment Break

10:30am – 11:30am

Maintenance of Immunosuppression in Renal Transplantation

Martha Pavlakis, MD

11:30am – 12:30pm

Optimizing Renal Support in Acute Kidney Injury: Case-Based Discussions

Paul M. Palevsky, MD

12:30pm – 1:30pm

Controversial Issues in the Treatment of Mild Hypertension

Bradley M. Denker, MD

THURSDAY, MARCH 22, 2018

7:00am – 7:30am

Continental Breakfast

7:30am – 8:30am

Management of Hypertension in Nephropathy and Diabetes: An Update

George L. Bakris, MD, FASH, FASN

8:30am – 9:30am

Management of the Failing Kidney: Best Practices for Care

Martha Pavlakis, MD

9:30am – 9:50am

Refreshment Break

9:50am – 10:50am

Management of Nondiabetic Chronic Kidney Disease

George L. Bakris, MD, FASH, FASN

10:50am – 11:15am

Important Ophthalmology and Dermatology Essentials: "Never Miss" Findings

Esther E. Freeman, MD, PhD

Theodore I. Steinman, MD

11:15am – 12:00pm

Current Controversies in Salt and Water

Mark L. Zeidel, MD

12:00pm – 1:15pm

Lunch Break

12:30pm – 1:15pm

Meet the Professors – Answering Your Challenging Questions (bring your lunch)

George L. Bakris, MD, FASH, FASN

Theodore I. Steinman, MD

1:15pm – 2:00pm

Management of the Incidentally Discovered Adrenal Mass

Anand Vaidya, MD, MMSc

2:00pm – 3:15pm

Endocrine Hypertension: Primary Aldosteronism and Pheochromocytoma

Anand Vaidya, MD, MMSc

3:15pm – 3:25pm

Rejuvenation Exercises

3:25pm – 3:45pm

Refreshment Break

3:45pm – 4:45pm

Treating Lupus Nephritis in 2018

Gerald B. Appel, MD

4:45pm – 5:45pm

Diagnosis and Management of Thrombotic Microangiopathies

Gerald B. Appel, MD

FRIDAY, MARCH 23, 2018

7:00am – 7:30am

Continental Breakfast

7:30am – 8:30am

AV Access: Issues and Challenges

Amy R. Evenson, MD, MPH

8:30am – 9:30am

Renal Aspects of Dysproteinemias

Gerald B. Appel, MD

9:30am – 10:00am

Refreshment Break

10:00am – 11:00am

Case-Based Workshop: Challenging Glomerular Biopsy Cases

Gerald B. Appel, MD

11:00am – 11:45am

Diuretic Resistance: Causes and Therapeutic Response

Jai Radhakrishnan, MD, MS

11:45am – 1:00pm

Lunch Break

12:15pm – 1:00pm

Meet the Professors – Answering Your Challenging Questions (bring your lunch)

Gerald B. Appel, MD

Jai Radhakrishnan, MD, MS

1:00pm – 2:00pm

Management of the Manifestations of Nephrotic Syndrome

Jai Radhakrishnan, MD, MS

2:00pm – 2:45pm

Hemodialysis Delivery: Complications and the Barriers to Adequate Dialysis

Mark E. Williams, MD, FACP, FASN

2:45pm – 3:00pm

Refreshment Break

3:00pm – 4:00pm

Renal Disease and Pregnancy

Ravi I. Thadhani, MD, MPH

4:00pm – 5:00pm

A Comprehensive Look at Renal Stones: Strategies and Treatment Options

Gary C. Curhan, MD, ScD

**Note: Program changes/
substitutions may be made
without notice.**

REGISTER AT www.NephrologyBoston.com



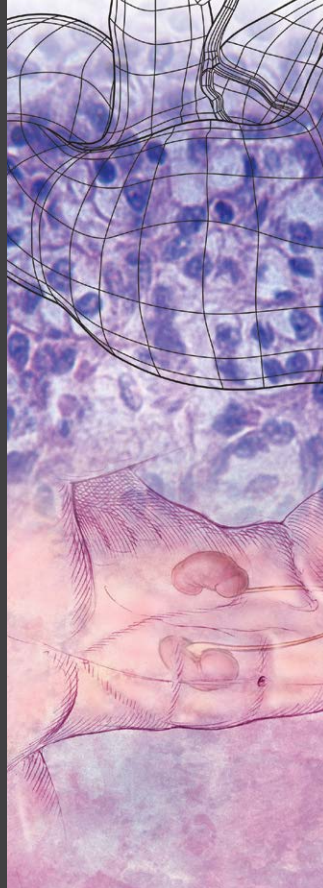
HARVARD
MEDICAL SCHOOL

Department of Continuing Education
P.O. Box 825
Boston, MA 02117-0825

NON-PROFIT ORG
US POSTAGE
PAID
Permit #72
Holliston, MA

**REGISTER
BEFORE
JAN. 5, 2018,
AND SAVE
\$100**

REGISTER NOW www.NephrologyBoston.com



NEPHROLOGY

MARCH 18 - 23, 2018

The Fairmont Copley Plaza | Boston, Massachusetts

